

ABRITES NEC Key Programmer Instruction Manual

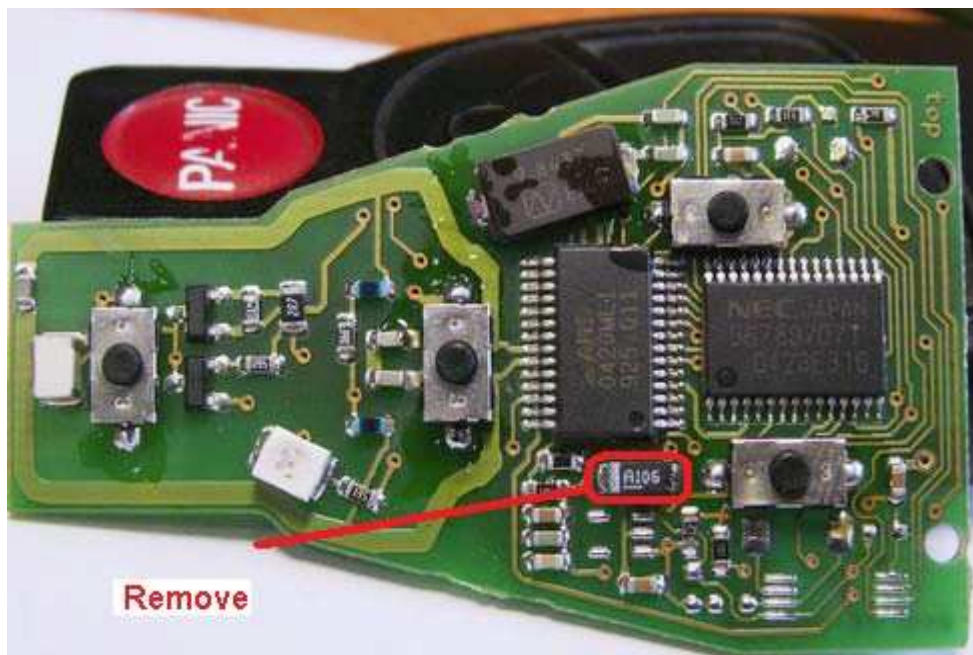
Please, note that upon a special request to edilock@yahoo.com we can send you a NEC board PCB, on which the NEC chip can be soldered. If you use this NEC board PCB you only need to desolder the NEC chip from the key, solder it on the NEC board PCB and then solder back the chip on the key after you have finished working with it. The rest of this document described what must be done when working on the PCB of the key itself.

Important changes since version 2.0 of the NEC Key Programmer software:

- It is not necessary to lift any pins of the NEC processor.
- It is necessary to shorten the size of the NEC programmer cable to no more than 15 cm.
- It is necessary to connect wires 1 and 2 to the red wire (power).

These are the steps you must follow in order to read/erase/write the NEC chip:

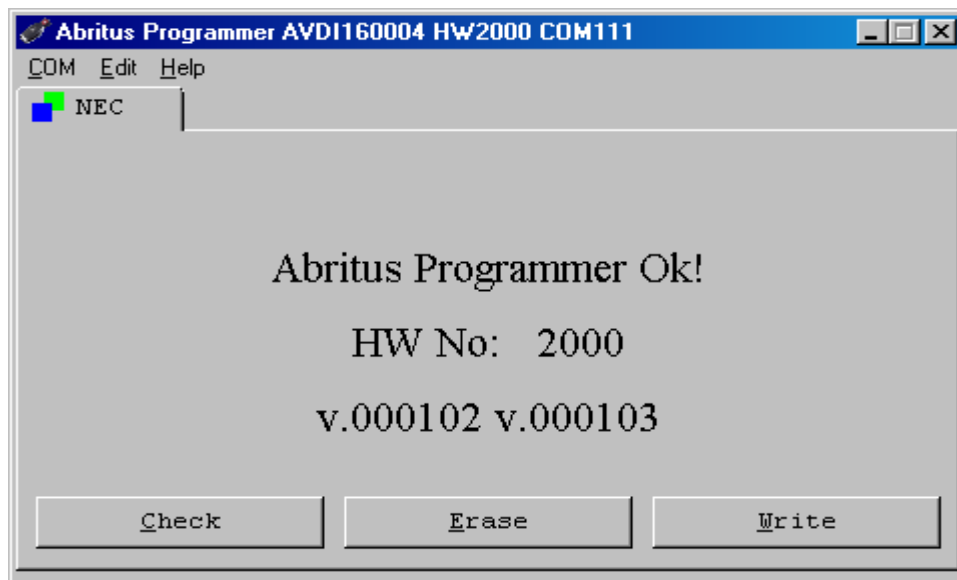
1. Remove the capacitor from the key PCB, as shown in the next picture and remember its polarity:



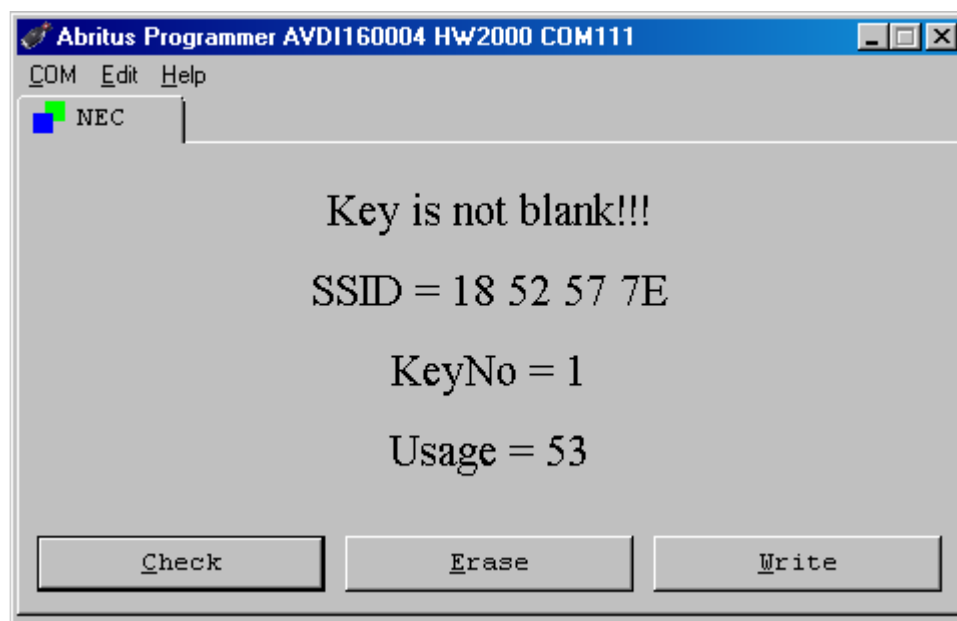
2. Connect the wires of the NEC Programmer in the following order (example pictures you can find at www.abritus72.com/NEC.html):

Black	GND
Red	Power +5V
Flat wire 1 (red mark)	Power +5V
Flat wire 2	Power +5V
Flat wire 3	NEC pin-1
Flat wire 4	NEC pin-19 (Reset)
Flat wire 5	NEC pin-12

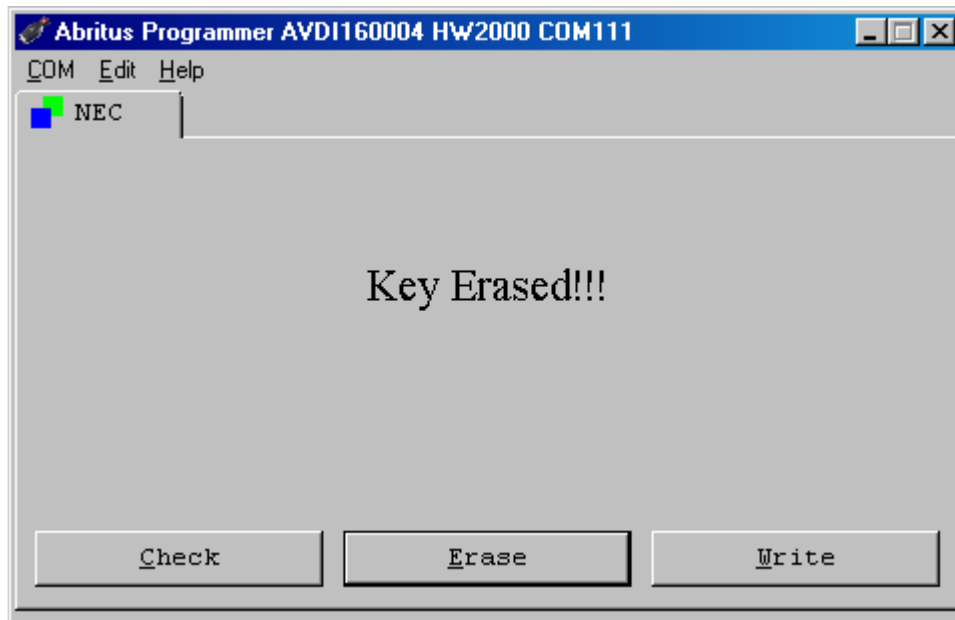
3. Start the Windows software and select the appropriate COM Port. If the NEC programmer is successfully detected you should see the following screen:



4. First, in order to check that the wires are connected correctly you should press the button "Check". If everything is correct, you should see the following screen with the information about your key:



5. In order to renew the key you should press the button “Erase”. Please, note that on some keys it may be necessary to press the button more than once. If, after 5 attempts, the key is still not erased – disconnect the NEC programmer for 10 seconds and then try again. If still unsuccessful, please, send the log files together with information about the key to edilock@yahoo.com



6. After you have successfully erased the key, you can program it with the key dump, generated from the Mercedes Commander.